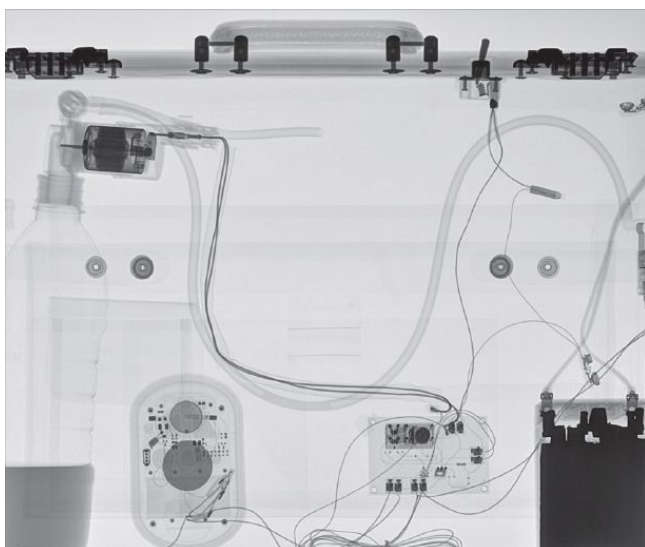


# FLAT PANEL X-RAY SYSTEM ORAMA II



Flat panel 14" x 17"

Communication panel / computer  
with interface ASYRMATOS

wired - 50 à 200 m

radio - 400 m

Generator control

wired

radio

Material discrimination

## FLAT PANEL X-RAY SYSTEM ORAMA II

ORAMA II system is not only the most popular DR system we offer, it is also the most rugged. With an IP64 rating and a drop test rating of 1 m, the ORAMA II is the ideal solution for field use. This system offers a 14" x 17" image area, 8 mm bottom border, and is shielded for up to 330 kV sources. Coupled with the ASÝRMATOS II interface, the ORAMA II provides users with up to 400 m line of site wireless operation. When used in conjunction with a Golden Engineering XRS-3, the system provides over 60 mm of steel penetration as well as material discrimination (organic detection) using the optional CHRÓMA module.



The ORAMA II is a large format portable digital X-ray system that generates high-resolution, high-sensitivity digital images. The complete X-ray imaging system includes a flat panel detector, an operating PC (optional), LIA image acquisition and enhancement software, wireless and wired interface, wired and wireless X-ray control, X-ray machine (optional), and carrying case.

The ORAMA II system includes full wired and wireless capabilities. Wireless communication between the imager and the computer, as well as wireless firing for 5-pin Golden Engineering X-ray machines is included in the base ORAMA II system. There is no need to buy additional wireless accessories.

The ORAMA II is available with three carrying case options. All cases options hold the ORAMA II panel, ASÝRMATOS II interface, batteries, power center, computer, cable reel, XR200 or XRS-3 X-ray machine, and all operation cables. Users can choose to have the system packaged in a single Storm iM2950 case, two Storm iM2720 cases, or a custom backpack.

With a battery run time of more than three hours per hot-swappable battery, the standard system provides up to seven hours of battery life allowing users to operate the system in wired or wireless modes all day even when mains power is not available. If mains power is available; the panel, interface, and PC can be powered indefinitely through a single power connection on the power center mounted in the carrying case.

### TECHNICAL DATA

Technology : Amorphous Silicon with TFT  
 Scintillator : Gadox  
 Pixel Area : 42.3 x 35.8 cm, 16.7" x 14.1"  
 Pixel Matrix : 3328 x 2816 pixels  
 Pixel Size : 127 µm  
 Limiting Resolution : 3.9 lp/mm  
 AD Conversion : 16 bits  
 Communications Interface Wireless : 2.4 GHz (5 GHz Optional) & Wired LAN  
 Communications Range : Wireless up to 400 m (using 2.4 GHz), Wired 50 m standard, option up to 200 m  
 Image Transfer : Wired 5 seconds, Wireless 9 seconds  
 X-ray Energy Range : 40 - 330 kV  
 Weight : 5.3 kg (11.7 lbs)  
 Dimensions (Panel) : 47.5 x 40.0 x 1.8 cm (18.7" x 15.7" x 0.7")  
 Power : 100-240 VAC (50-60 Hz), 2A using included power supply, 14.4 V, 93 Wh, Li-Ion hot-swappable battery pack  
 Operating Temperature : -20 to 50 °C  
 Storage Temperature : -20 to 50 °C  
 PC Specs (Minimum) : Core i7 Processor, 4 GB RAM, 500 GB hard disk, 14" 1600 x 900 display, Windows 7 Professional